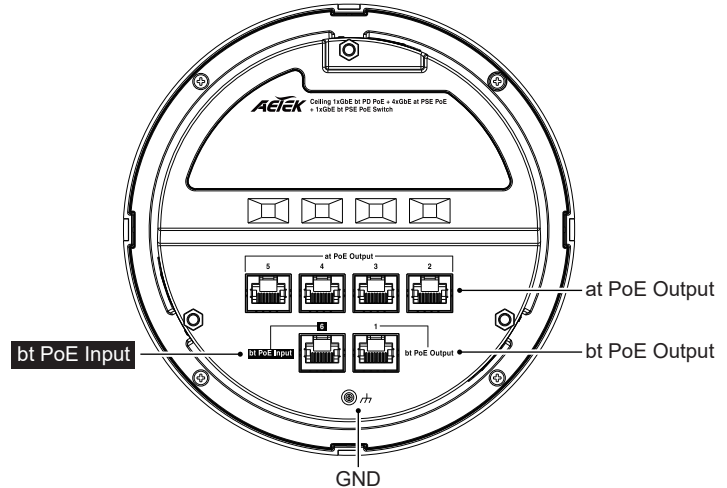
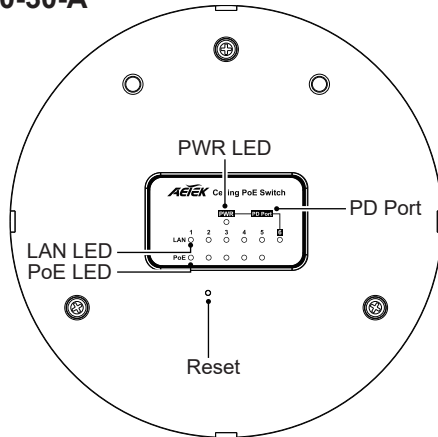


PACKAGE CONTENTS

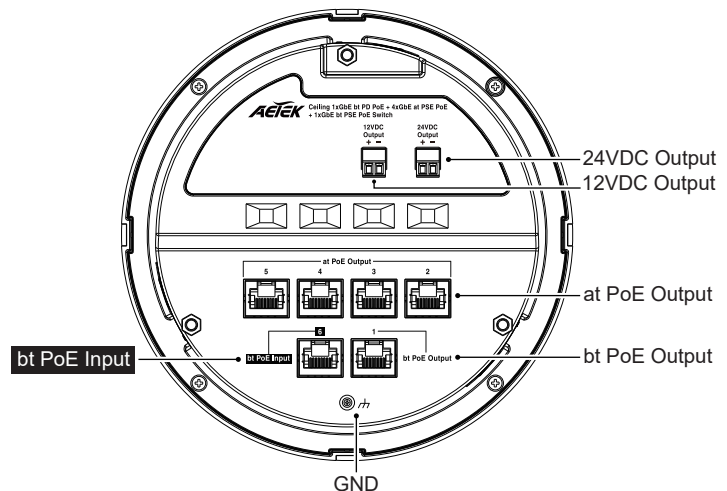
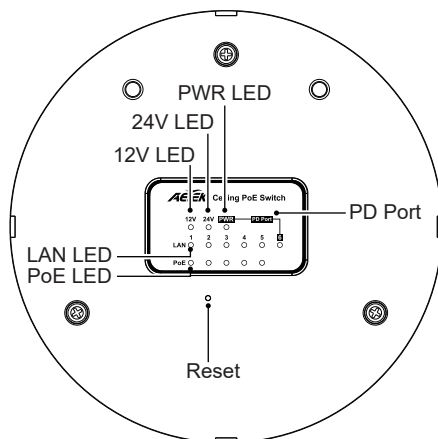
* 1x PoE switch	* 1x Quick Installation Guide
-----------------	-------------------------------

CONNECTION

C42-050-30-A



C42-050-30-B



LED DEFINITIONS

C42-050-30-A

Power	Amber ON	The Power LED lights up when the switch is connected to a power source.
LAN	Green ON	Port is enabled and link established.
	Green Blinking	Port is transmitting and receiving data.
PoE	Amber ON	Indicates the PoE powered device (PD) is connected and the port supplies power successfully.
	Amber Off	Indicates no powered device (PD) connected.

C42-050-30-B

Power	Amber ON	The Power LED lights up when the switch is connected to a power source.
LAN	Green ON	Port is enabled and link established.
	Green Blinking	Port is transmitting and receiving data.
PoE	Amber ON	Indicates the PoE powered device (PD) is connected and the port supplies power successfully.
	Amber Off	Indicates no powered device (PD) connected.
12V	Amber ON	Have output 12VDC power.
24V	Amber ON	Have output 24VDC power.

Installation Steps

C42-050-30-A / C42-050-30-B

Installed on the system ceiling

1. Attach the ceiling mount bracket to plasterboard, etc.

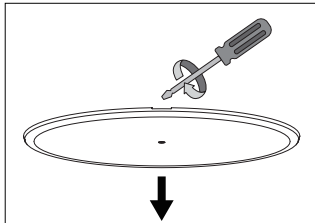
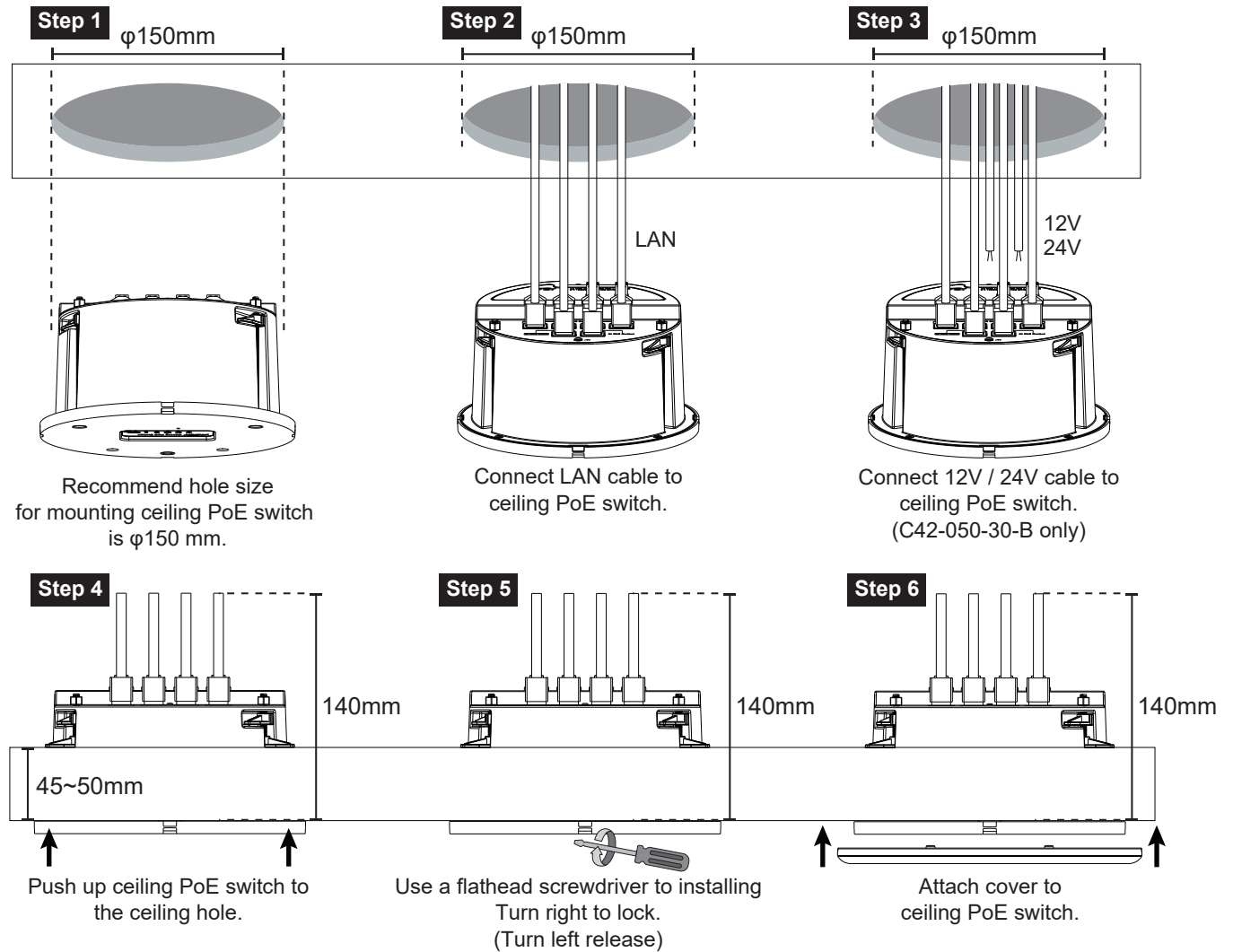
- It is recommended to add the fastening screw to the hole size of the ceiling, turn it with a screwdriver to install it.

The ceiling thickness that can be connected with the clamping bracket is from 5 to 45 mm.

- The recommended screw torque is 7kgf-cm \pm 3.
- Install on the ceiling with sufficient strength.
- If you have to install it on rock wool ceiling and other weak ceiling panels, please provide enough reinforcement.
- The recommended ceiling opening size is ϕ 150mm.
- The recommended minimum space (height) for ceiling switch installation is 140mm (For Installation and CAT5/6 cable routing.)

Installation Steps

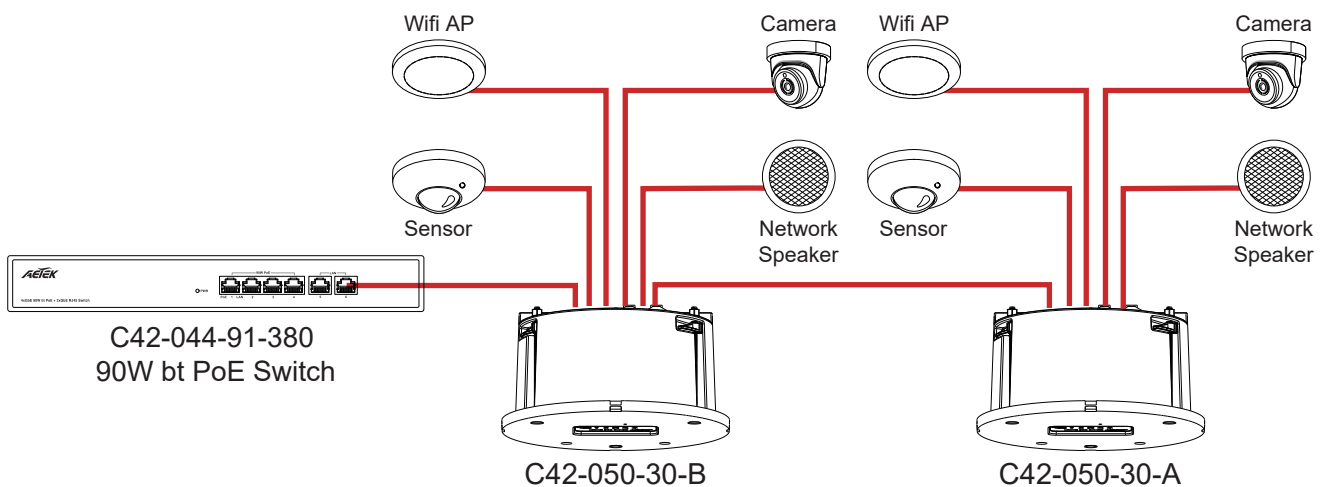
C42-050-30-A / C42-050-30-B



After installing this product on the ceiling, install the included panel.

Pay attention to the installation direction, align the groove with the notch on the panel and install it correctly.

- Remove the panel with a flat-head screwdriver.



PoE (Data + Power) ———