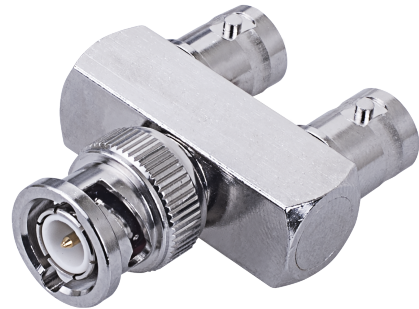


# BNC-Y

## Y-Type BNC Adapter



### Technical Specifications

Model	BNC-Y
Dimensions	40.1 (mm)
Weight	20G
Supported Models	EPoC : XC10-041-250 XC10-084-380 XC10-164-750 XC51-084-380 XC51-164-750 XE10-110-RX XE11-110-RX XE10-110-TX XE12-120-TX XE52-120-TX

