

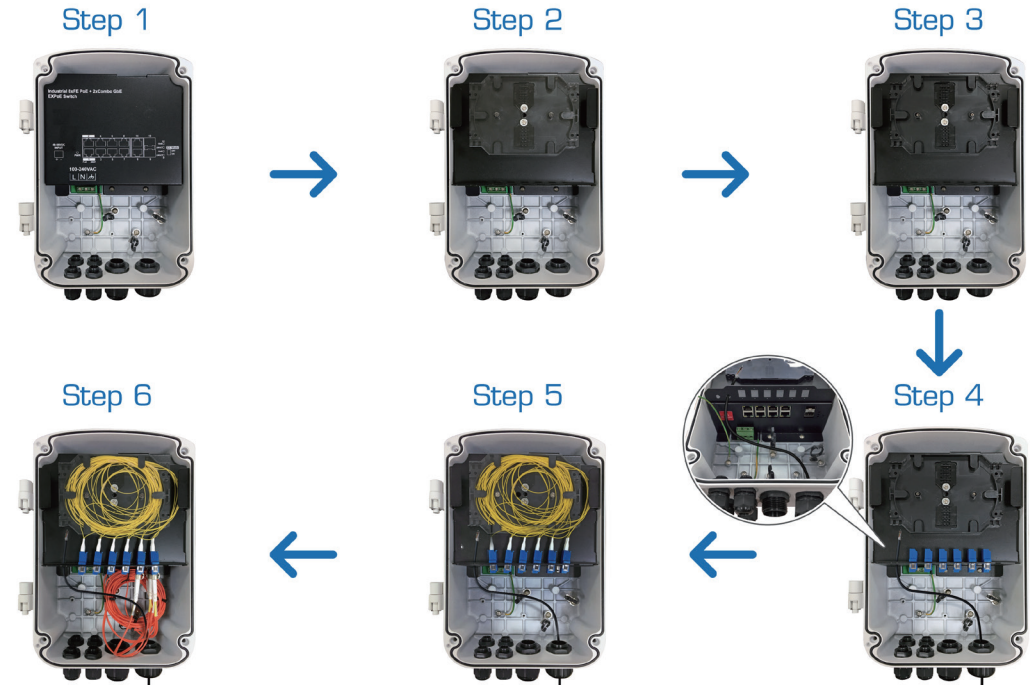
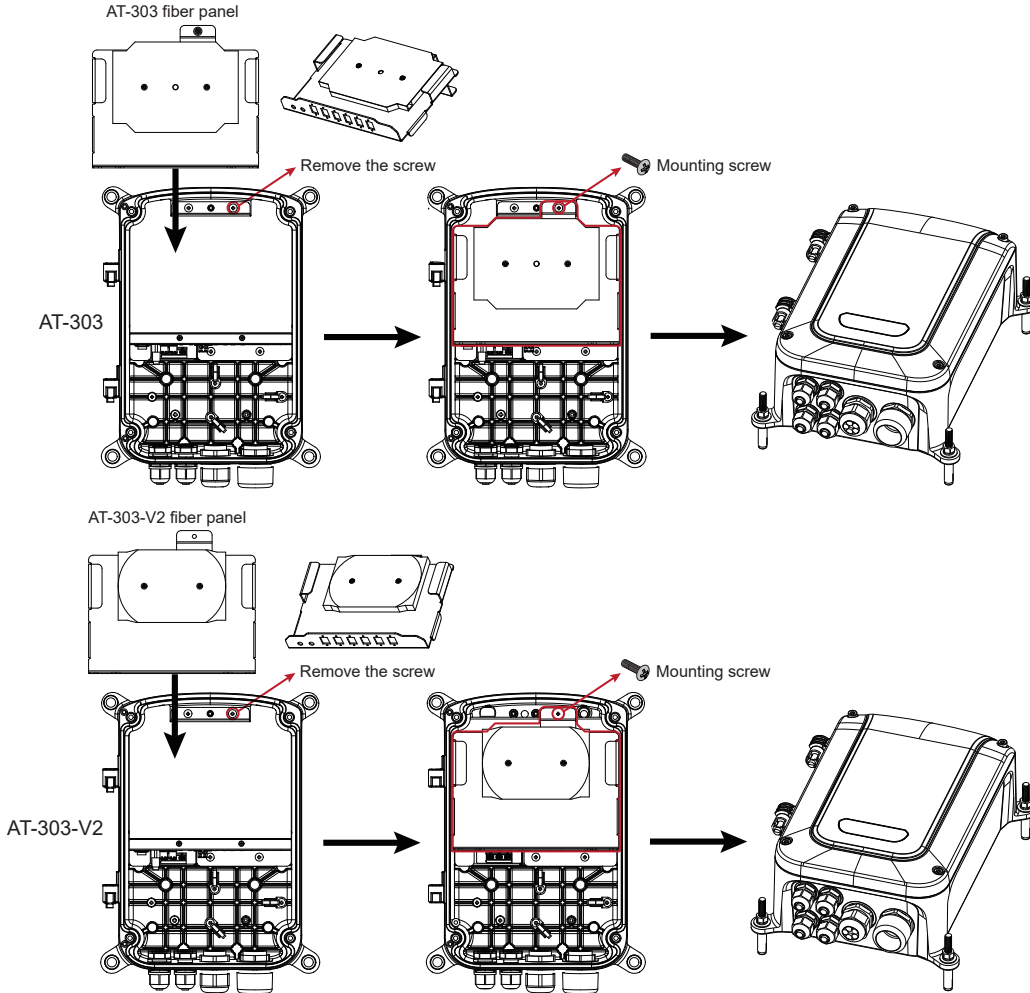
Quick Installation Guide

PACKAGE CONTENTS

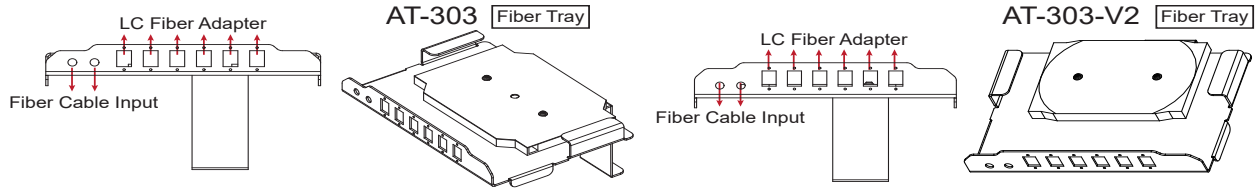
* 1x Fiber Splice Tray	* 1x Quick Installation Guide
------------------------	-------------------------------

Note : AT-303 & AT-303-V2 only for H21-082-31-150, H40-044-30-150-v3, H40-044-91-250-v3, H40-082-30-250-v3, H40-044-30-DC, H40-044-91-DC, H40-082-30-DC, H51-084-30-250, H51-084-30-250-V2, H51-044-90-250, H51-044-91-250, H51-044-30-150, H51-044-30-150-V2, H51-044-30-DC, H51-044-30-DC-V2, H51-084-30-DC, H51-084-30-DC-V2, H51-044-90-DC, H51-044-91-DC, H60-044-30-150, H60-044-30-150-V2, H60-084-30-250, H60-084-30-250-V2, H60-044-90-250, H60-044-91-250, H60-044-30-DC, H60-044-30-DC-V2, H60-084-30-DC, H60-084-30-DC-V2, H60-044-90-DC, H60-044-91-DC use.

Installation



1. Open Outdoor PoE Switch cover.
2. Remove the screws on the top above Outdoor PoE Switch.
3. Load the AT-303 & AT-303-V2 into the Outdoor PoE Switch.
4. After installation, lock the Outdoor PoE Switch cover.
5. Install the Outdoor PoE Switch on a wall or pole or corner (with AT-100 or AT-101 or AT-200)



Tool Requirement

1. Cable stripper and cutters
2. Fusion splicing machine and related tools
3. Single SC to single SC, single SC to single LC, single LC to single LC or dual LC to dual LC fiber adapters, screw and screw nut
4. single mode or multi mode fiber pigtail

⚠ Warning

Always wear eye protection when working with optical fibers. Never look into the end of terminated or unterminated fibers. Laser radiation is invisible but can damage eye tissue. Never eat, drink or smoke when working with fibers. This could lead to ingestion of glass particles.

All specifications are subject to change without notice.
Copyright © 2024 AETEK INC. All rights reserved.