



# BK-105 Camera Bracket Installation Guide

## PACKAGE CONTENTS

* 1x Camera Bracket	1x Fan Bracket
---------------------	----------------

## NOTE:

Support Camera Model: Avigilon H4 PRO, H5 PRO Box camera  
Support Enclosure: P2000-I, P2000-AI, P6000-I, A1000

## INSTALLATION:

### Step 1. Remove Old Camera Bracket

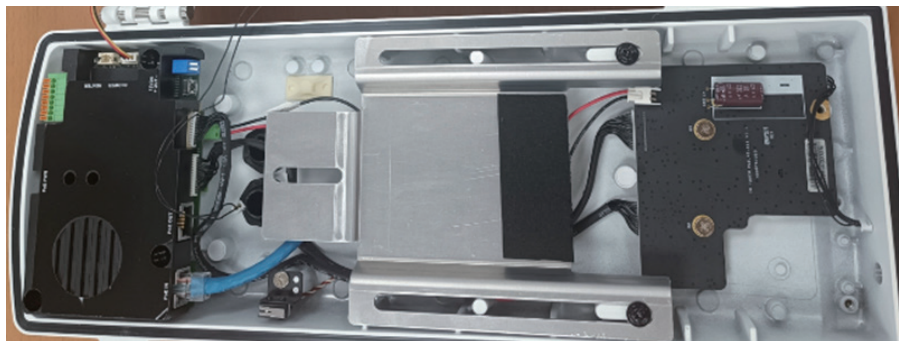
1-1. Open the enclosure.



1-2. Remove old camera bracket.

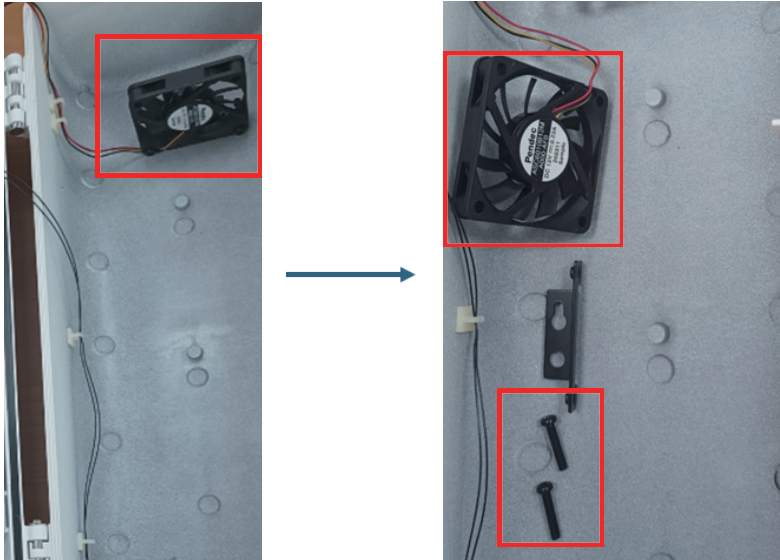


1-3. Install the new camera bracket.

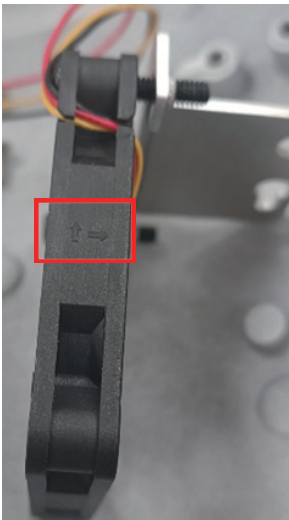


## Step 2. Relocate the Fan Bracket

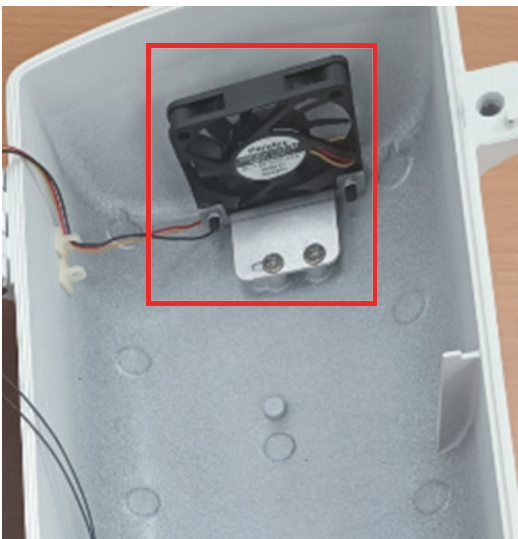
2-1. Remove the fan and keep the two screws.



2-2. Check the arrow on the fan for the installation direction toward window.



2-3. Fix the fan by using the new fan mount kit and two screws.



All specifications are subject to change without notice.  
Copyright © 2026 AETEK INC. All rights reserved.