

### PACKAGE CONTENTS

* 1x IR unit	1x power cord	1x T20 L wrench
--------------	---------------	-----------------

VR-120: 12W VAIR LED; VR-241: 24W VAIR LED; VR-481: 48W VAIR LED.

### NOTE:

Only the 24W (VR-241) and 48W (VR-481) IR units require an additional power connection from the power distribution unit to the IR unit.

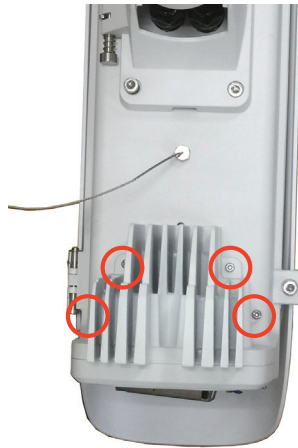
!! Must power off the camera enclosure before installing the IR LED. The camera housing will be damaged if the IR LED is installed when the camera housing is powered. !!

### INSTALLATION:

1. Remove the retention cover under your housing.

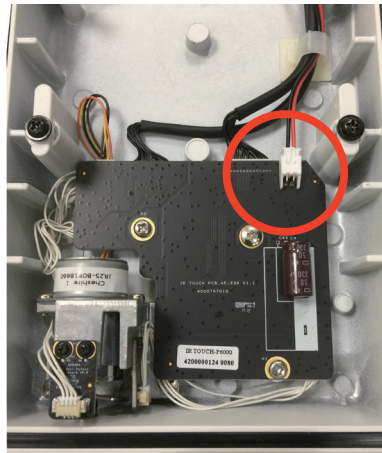
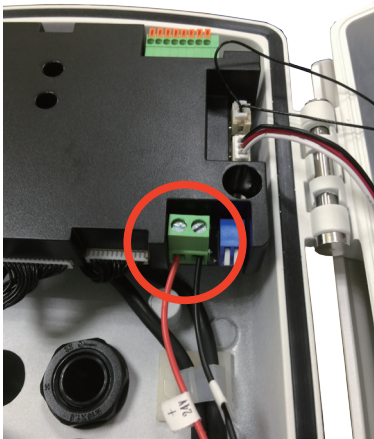


2. Install the IR unit by fastening 4 T20 screws.



3. Connect the included power cord between the power distribution unit and the front section of the housing.

P6000 Series:



P2000 Series:

