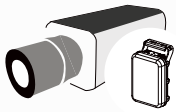


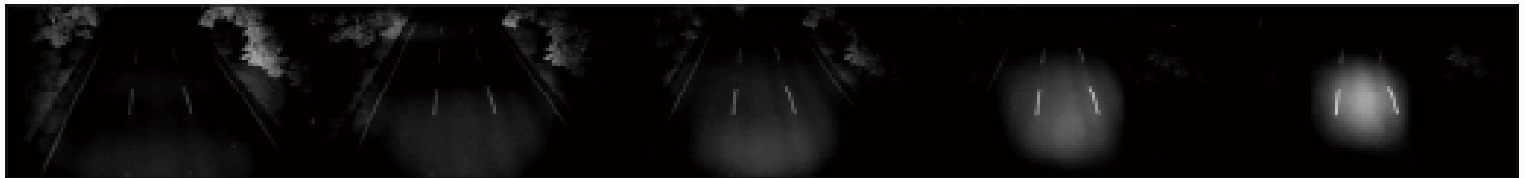


Professional Illuminators for Security Lighting.



1 Secondary Optical Design — Best illumination for camera

- CVA Tech (Continuous Variable Angle Technology)



2 Easy Configuration

- 4 LED ON/OFF Control Modes
- Adjustable Light Sensor Sensitivity
- Support Pelco D via RS485 Interface



3 Smart Protection

- LED Damage Alarm
- LED High Temp Self-protection
- Diagnostic



4 Reliable Casing

- Solid Particle Protection IP6X
- Liquid Ingress Protection IPX6/IPX8
- Impact Protect IK10



5 Beam Angle Adjust

- Fix Angle
- Manual CVA Tech
- Motor CVA Tech

Applicaitons

Security Lighting



Long Distance



Generic View

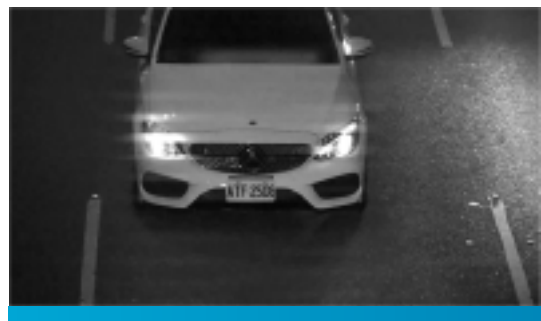


Panoramic Lighting

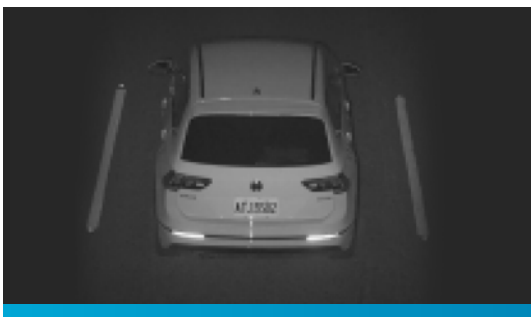
ANPR Lighting



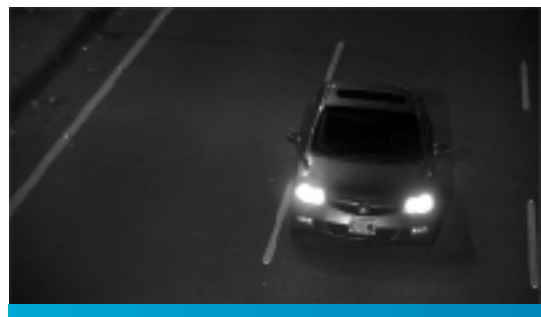
Case Studies



Continuous Mode



Pulse Mode



Strobe Mode



IP POE				
Model Series	FR-248	FW-248	VR-488	VW-488
Model Name	FR-248-010 FR-248-035 FR-248-070 FR-248-100	FW-248-010 FW-248-035 FW-248-070 FW-248-100	VR-488-1040 VR-488-2040 VR-488-4080 VR-488-90120 VR-488-180	VW-488-1040 VW-488-2040 VW-488-4080 VW-488-90120
Power Consumption	24W	24W	48W	48W
Lighting Source	IR 850nm	White Light 5000K	IR 850nm	White Light 5000K
Security Lighting Angles/ Max. Distance	FR-248-010 / FW-248-010: 10°/150m (492ft) FR-248-035 / FW-248-035: 35°/50m (164ft) FR-248-070 / FW-248-070: 70°/30m (98ft) FR-248-100 / FW-248-100: 100°/20m (65ft)		VR-488-1040 / VW-488-1040: 10°~40°/100~250m (590~850ft) VR-488-2040 / VW-488-2040: 20°~40°/120~200m (393~656ft) VR-488-4080 / VW-488-4080: 40°~80°/60~90m (196~295ft) VR-488-90120 / VW-488-90120: 90°~120°/45~55m (147~180ft) VR-488-180: 180°/ 40m (131ft)	
ANPR Lighting Angles/ Lances/ Max. Distances	FR-248-010: 1 Lane / 15~25m (49~82ft) FR-248-035: 1 Lane / 3~15m (9.8~49.2ft)		VR-488-1040: 1 Lane / 15~30m (49.2~98.4ft) 2 Lanes / 20~30m (65.6~98.4ft) VR-488-2040: 1 Lane / 3~15m (9.8~49.2ft) 2 Lanes / 8~20m (65.6~98.4ft)	
Angle Control	Fixed		VR-488-180: Fixed Other Model: Manual CVA Tech	
LED ON/OFF Control	Network or Light Sensor or DI		Network or Light Sensor or DI or Timer	
Power Input	PoE + IEEE 802.3at or 24VDC		60W bt PoE or 24VDC	
Working Temperature	-40°C~-60°C (-104°F~140°F)		-40°C~-60°C (-104°F~140°F)	
Casing	CE, FCC		EN, CE, FCC	
Certifications	IP66, IK10		IP66, IP68, IK10	
Dimensions (L x W x H)	157 x 105 x 80.6 mm (6.12" x 4.09" x 3.14")		220 x 160 x 73 mm (8.6" x 6.3" x 2.9")	



Hybrid IP POE		
Model Series	FH-248	VH-488
Model Name	FH-248-010 FH-248-035 FH-248-070 FH-248-100	VH-488-1040 VH-488-2040 VH-488-4080 VH-488-90120 VH-488-180
Power Consumption	24W	48W
Lighting Source	IR 850nm + White Light 5000K	IR 850nm + White Light 5000K
Security Lighting Angles/ Max. Distance	FH-248-010: 10°/ 180m (590ft) FH-248-035: 35°/ 60m (196ft) FH-248-070: 70°/ 35m (114ft) FH-248-100: 100°/ 25m (85ft)	VH-488-1040: 10°~40°/ 100~250m (590~850ft) VH-488-2040: 20°~40°/ 120~200m (393~656ft) VH-488-4080: 40°~80°/ 60~90m (196~295ft) VH-488-90120: 90°~120°/ 45~55m (147~180ft) VH-488-180: 180°/ 40m (131ft)
ANPR Lighting Angles/ Lances/ Max. Distances	N/A	VH-488-1040: 1 Lane / 15~30m (49.2~98.4ft) 2 Lanes / 20~30m (65.6~98.4ft) VH-488-2040: 1 Lane / 3~15m (9.8~49.2ft) 2 Lanes / 8~20m (65.6~98.4ft)
Angle Control	Fixed	VH-488-180: Fixed Other Model: Manual CVA Tech
LED ON/OFF Control	Network or Light Sensor or DI	Network or Light Sensor or DI or Timer
Power Input	PoE+ IEEE 802.3at or 24VDC	60W bt PoE or 24VDC
Working Temperature	-40°C~-60°C (-104°F~140°F)	-40°C~-60°C (-104°F~140°F)
Casing	CE, FCC	EN, CE, FCC
Certifications	IP66, IK10	IP66, IP68, IK10
Dimensions (L x W x H)	157 x 105 x 80.6 mm (6.12" x 4.09" x 3.14")	220 x 160 x 73 mm (8.6" x 6.3" x 2.9")



	Economic		Manual CVA	
Model Series	FR-326	FW-326	VR-486	VW-486
Model Name	FR-326-010 FR-326-035 FR-326-070 FR-326-100	FW-326-010 FW-326-035 FW-326-070 FW-326-100	VR-486-1040 VR-486-2040 VR-486-4080 VR-486-90120 VR-486-180	VW-486-1040 VW-486-2040 VW-486-4080 VW-486-90120
Power Consumption	32W	32W	48W	48W
Lighting Source	IR 850nm	White Light 5000K	IR 850nm	White Light 5000K
Security Lighting Angles/ Max. Distance	FR-326-010 / FW-326-010: 10°/ 180m (590ft) FR-326-035 / FW-326-035: 35°/ 60m (196ft) FR-326-070 / FW-326-070: 70°/ 35m (114ft) FR-326-100 / FW-326-100: 100°/ 25m (85ft)		VR-486-1040 / VW-486-1040: 10°~40°/ 100~250m (590~850ft) VR-486-2040 / VW-486-2040: 20°~40°/ 120~200m (393~656ft) VR-486-4080 / VW-486-4080: 40°~80°/ 60~90m (196~295ft) VR-486-90120 / VW-486-90120: 90°~120°/ 45~55m (147~180ft) VR-486-180: 180°/ 40m (131ft)	
ANPR Lighting Angles/ Lances/ Max. Distances	FR-326-010: 1 Lane / 15~25m (49~82ft) FR-326-035: 1 Lane / 3~15m (9.8~49.2ft)		VR-486-1040: 1 Lane / 15~30m (49.2~98.4ft) 2 Lanes / 20~30m (65.6~98.4ft) VR-486-2040: 1 Lane / 3~15m (9.8~49.2ft) 2 Lanes / 8~20m (65.6~98.4ft)	
Angle Control	Fixed		VR-486-180: Fixed Other Model: Manual CVA Tech	
LED ON/OFF Control	Light Sensor or DI		Light Sensor or DI or Timer or RS485 (Pelco D)	
Power Input	24VAC or 24VDC		24VAC or 24VDC	
Working Temperature	-40°C~60°C (-104°F~140°F)		-40°C~60°C (-104°F~140°F)	
Casing	CE, FCC		EN, CE, FCC	
Certifications	IP66, IK10		IP66, IP68, IK10	
Dimensions (L x W x H)	157 x 105 x 80.6 mm (6.12" x 4.09" x 3.14")		220 x 160 x 73 mm (8.6" x 6.3" x 2.9")	



	Motor CVA	Pulse Mode
Model Series	VR-806	VR-246
Model Name	VR-806-1040 VR-806-2040	VR-246-1040 VR-246-2040
Power Consumption	90W	24W (288W Pulse Mode Power)
Lighting Source	IR 850nm	IR 850nm
Security Lighting Angles/ Max. Distance	VR-806-1040: 10°~40°/ 140~350m (459~1148ft) VR-806-2040: 20°~40°/ 170~280m (557~918ft)	N/A
ANPR Lighting Angles/ Lances/ Max. Distances	VR-806-1040: 1 Lane / 15~30m (49.2~98.4ft) 2 Lanes / 20~30m (65.6~98.4ft) VR-806-2040: 1 Lane / 3~15m (9.8~49.2ft) 2 Lanes / 8~20m (65.6~98.4ft)	VR-246-1040: 1 Lane / 15~30m (49.2~98.4ft) 2 Lanes / 20~30m (65.6~98.4ft) VR-246-2040: 1 Lane / 3~15m (9.8~49.2ft) 2 Lanes / 8~20m (65.6~98.4ft)
Angle Control	Manual CVA Tech	
LED ON/OFF Control	Light Sensor or DI or RS485 (Pelco D)	
Power Input	24VAC or 24VDC	24VDC
Working Temperature	-40°C~50°C (-104°F~122°F)	-40°C~70°C (-104°F~158°F)
Casing	EN, CE, FCC	
Certifications	IP66, IP68, IK10	
Dimensions (L x W x H)	220 x 160 x 73 mm (8.6" x 6.3" x 2.9")	